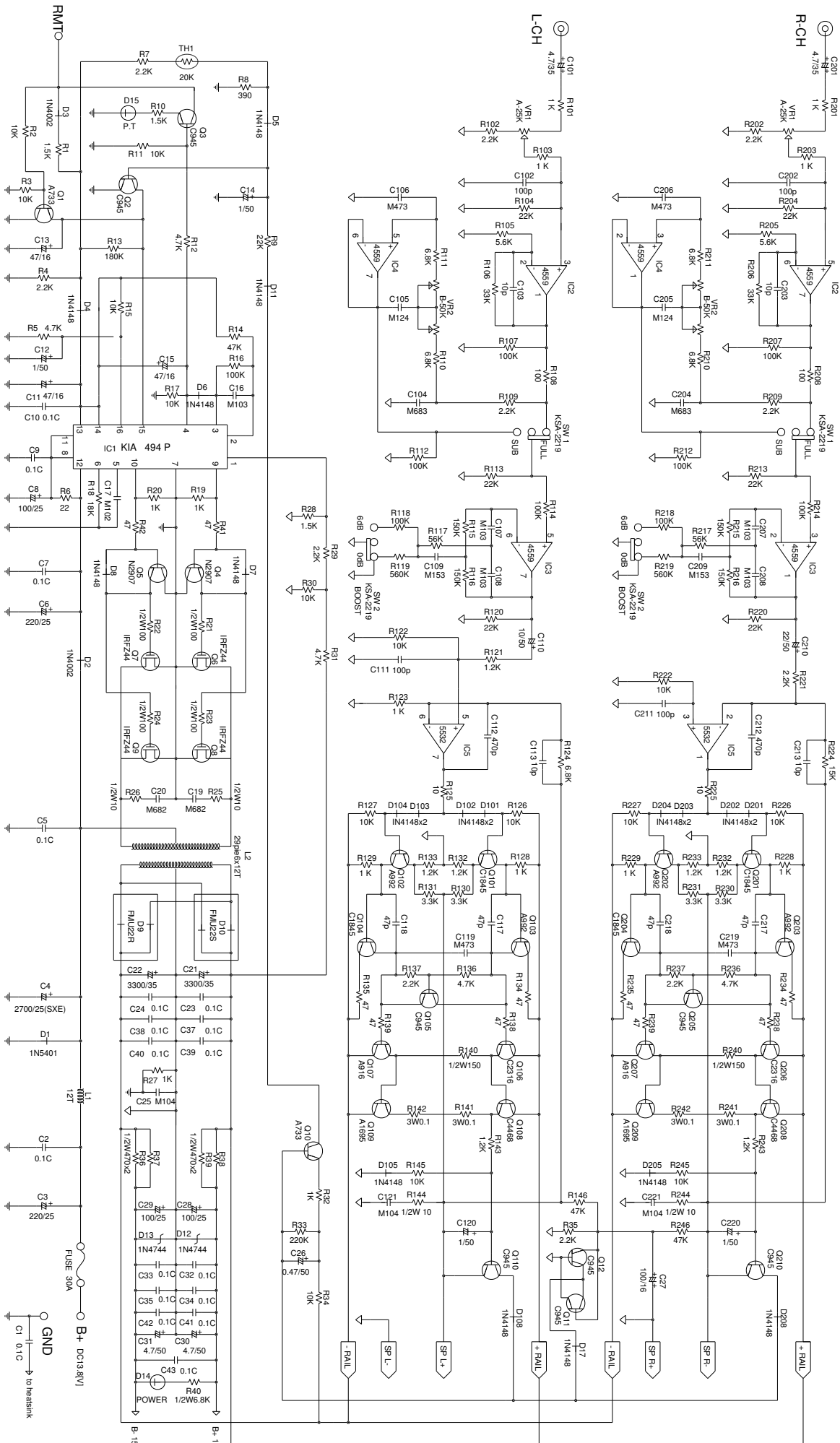


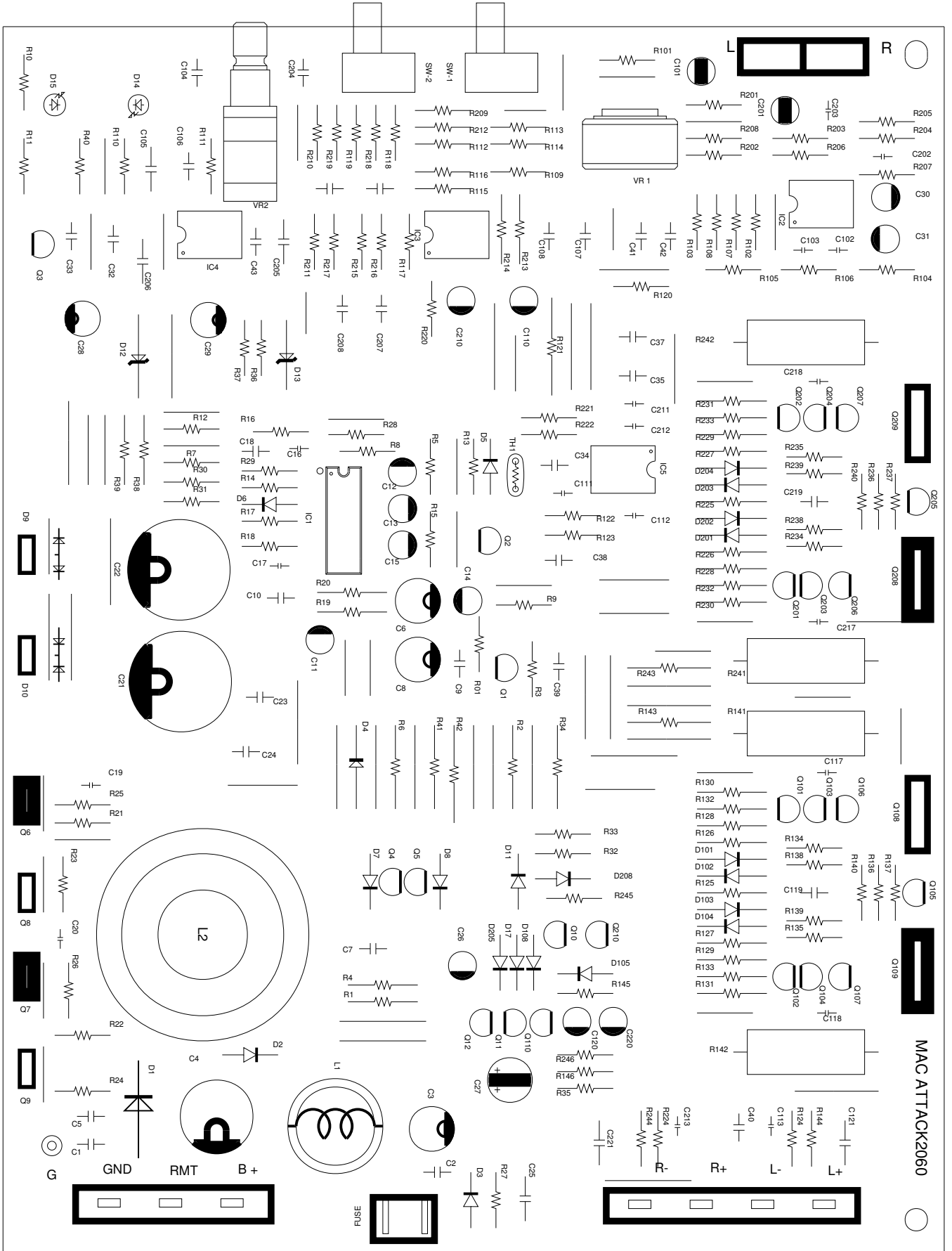


2060

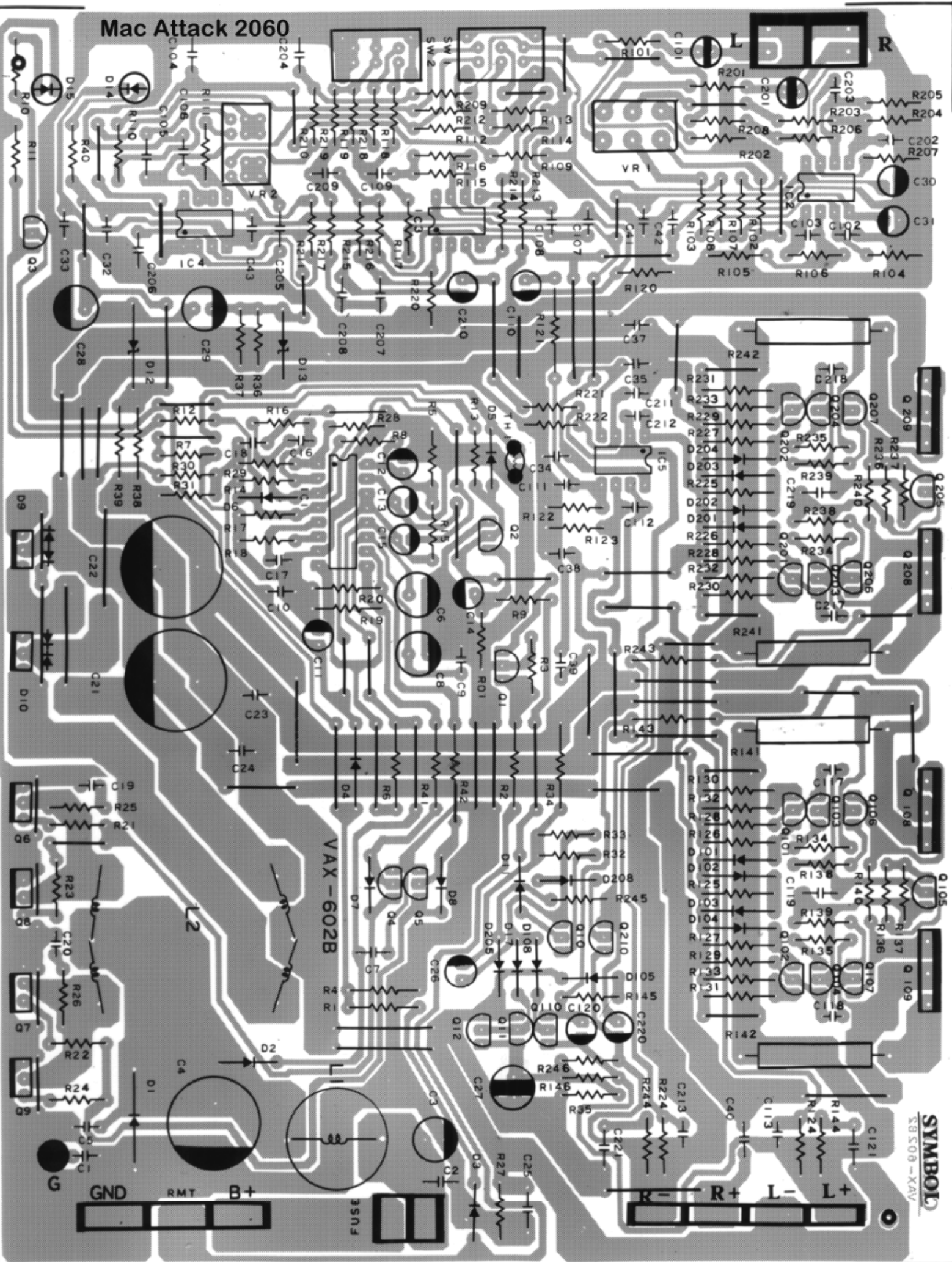
Mac Attack 2060



Mac Attack 2060



Mac Attack 2060



SYMBOL
38508-XAV

MAC ATTACK 2060 PART LIST

DESCRIPTION	SPECIFICATION	Q'TY	DRAWING NO.	REMARK
PCB - MAIN	1.6x168.5x219.5 FR-1(VAX602B)	1	MAC ATTACK 2060 PCB	
POWER T.R	KSA 1695-0	2	Q 109, 209	
	KSC 4468-0	2	Q 108, 208	
I.C.	KIA 494 P	1	IC 1	
	KIA 4559 P	3	IC 2, 3, 4	
	KA 5532	1	IC 5	
FET	IRFZ 44A	4	Q 6, 7, 8, 9	
DIODE	FMU 22 S	1	D 10	
	FMU 22 R	1	D 9	
DIODE	1N 5401	1	D 1	
	1N 4002	2	D 2, 3	
-SWITCHING	1N 4148	19	D 4, 5, 6, 7, 8, 11, 17, 101, 102, 103	
			D 104, 105, 108, 201, 202, 203, 204	
			D 205, 208	
-ZENNER	UZP 15 B 1[W]	2	D 12, 13	
TRANSISTOR	KSC 945 C-Y	8	Q 2, 3, 11, 12, 105, 110, 205, 210	
	KSA 733 C-Y	2	Q 1, 10	
	KSC 1845 - F	4	Q 101, 104, 201, 204	
	KSA 992 - F	4	Q 102, 103, 202, 203	
	KSC 2316 Y	2	Q 106, 206	
	KSA 916 Y	2	Q 107, 207	
	KTN 2907 A	2	Q 4, 5	
R - CEMENT	3[W] 0.1 J	4	R 141, 142, 241, 242	
LED	KLK - 114 L	1	D 14	
	KLR - 114 L	1	D 15	
R - CARBON	1/2[W] 10 (S)	4	R 25, 26, 144, 244	
(J)	1/2[W] 82 (S)	4	R 21, 22, 23, 24	
	1/2[W] 150 (S)	2	R 140, 240	
	1/2[W] 470 (S)	4	R 36, 37, 38, 39	
	1/2[W] 6.8 K (S)	1	R 40	
	1/4[W] 10	2	R 125, 225	
	1/4[W] 22	1	R 6	
	1/4[W] 47	10	R 41, 42, 134, 135, 138, 139, 234, 235	
			R 238, 239	
	1/4[W] 100	2	R 108, 208	
	1/4[W] 470	1	R 10	
	1/4[W] 1 K	13	R 19, 20, 27, 32, 101, 103, 123, 128	
			R 129, 201, 203, 228, 229	
	1/4[W] 1.2 K	7	R 121, 132, 133, 143, 232, 233, 243	
	1/4[W] 1.5 K	2	R 1, 28	

MAC ATTACK 2060 PART LIST

DESCRIPTION	SPECIFICATION	Q'TY	DRAWING NO.	REMARK
	1/4[W] 2.2 K	10	R 4, 29, 35, 102, 109, 137, 202	
			R209, 221, 237	
	1/4[W] 3.3 K	4	R 130, 131, 230, 231	
	1/4[W] 4.7 K	5	R 5, 12, 31, 136, 236	
	1/4[W] 5.6 K	2	R 105, 205	
	1/4[W] 6.8 K	5	R 110, 111, 124, 210, 211	
	1/4[W] 7.5 K	1	R 7	
	1/4[W] 10 K	14	R 2, 3, 15, 17, 30, 34, 122, 126, 127	
			R 145, 222, 226, 227, 245	
	1/4[W] 15 K	1	R 224	
	1/4[W] 18 K	1	R 18	
	1/4[W] 22 K	7	R 9, 104, 113, 120, 204, 213, 220	
	1/4[W] 33 K	2	R 106, 206	
	1/4[W] 39 K	1	R 8	
	1/4[W] 47 K	5	R 1, 11, 14, 146, 246	
	1/4[W] 56 K	2	R 117, 217	
	1/4[W] 100 K	9	R 16, 107, 112, 114, 118, 207, 212	
			R 214, 218	
	1/4[W] 150 K	4	R 115, 116, 215, 216	
	1/4[W] 180 K	1	R 13	
	1/4[W] 220 K	1	R 33	
	1/4[W] 560 K	2	R 119, 219	
C-CAPACITOR	10 pF J CH	4	C 103, 113, 203, 213	
	47 pF J CH	4	C 117, 118, 217, 218	
	100 pF J SL	4	C 102, 111, 202, 211	
	470 pF BK	2	C 112, 212	
	0.1 uF ZF	20	C 1, 2, 5, 7, 9, 10, 18, 23, 24, 32, 33, 34	
			C 35, 37, 38, 39, 40, 41, 42, 43	
M-CAPACITOR	100[V] 102 J	1	C 17	
	100[V] 682 J	2	C 19, 20	
	100[V] 103 J	5	C 16, 107, 108, 207, 208	
	100[V] 153 J	2	C 109, 209	
	100[V] 473 J	4	C 106, 119, 206, 219	
	100[V] 683 J	2	C 104, 204	
	100[V] 104 J	3	C 25, 121, 221	
	100[V] 124 J	2	C 105, 205	
E-CAPACITOR	50[V] R47 uF	1	C 26	
	50[V] 1 uF	2	C 12, 14	
	50[V] 4R7 uF	4	C 30, 31, 120, 220	
	50[V] 10 uF	1	C 110	

MAC ATTACK 2060 PART LIST

DESCRIPTION	SPECIFICATION	Q'TY	DRAWING NO.	REMARK
	50[V] 22 uF	1	C 210	
	35[V] 3300 uF (SRF)	2	C 21, 22	GOLD
	25[V] 100 uF	2	C 8, 28	
	25[V] 220 uF	2	C 3, 6	
	25[V] 2700 uF (SXE)	1	C 4	GOLD
	16[V] 47 uF	4	C 11, 13, 15, 29	
	35[V] 4R7 uF (B,P)	2	C 101, 201	
	16[V] 100 uF (B,P)	1	C 27	
THERMISTOR	20 [.] WITH WIRE 140m/m	1		
COIL-SPRING	CHOCK COIL 12.5 φ	1	L 01	
COIL-TROID	1st : 1.0φ X 4 X 6 (T)			
1st :PEW	2nd: 1.4φ X 2 X 12 (T)	1	L 02	
2nd:UEW	CORE:29φ ISU			
VOLUME	A - 25 K X 2 (L=15m/m)	1	VR 1	
	V9MG(4R)PH15KC3B50Kx4	1	VR 2	
SLIDE SWITCH	JSS - 2219	2	SW 1, 2	
RCA JACK	2 pin GOLD (WJ-9205A1)	1		
TERMINAL	3 pin GOLD "L" type (WT-9103)	1		
	4 pin GOLD "L" type (WT-9101)	1		
FUSE HOLDER	WF - 9402 P	1		
FUSE	25 [A]	2		
LUG TERMINAL	#20 BLK 80m/m 3.2φ	1		
VOLUME KNOB	RA	2		
LED SUPPORT	10 m/m	2		
CUTION	10 X 10 X 6T	3		
SILICON-RUBBER	AR2330P	235	M/M	
TR B.K.T	D 45 X 12 X 5T	2		
	E-1 30 X 12 X 5T	3		
PCB B.K.T	A TYPE	2		
SCREW	T/T PH 3 X 8	13		
(BLACK)	T/T PH 3 X 15	5		
	T/T WPH 3 X 6	11		
	T/S-2 BH 2 X 6	2		
	T/S-1 BH 4 X 16	4		
	SPRING WASHER 4φ	4		
	PLANE WASHER 4φ	4		
HEAT SINK	220 m/m	1	MAC ATTACK 2060 HEATSINK	
BOTTOM	219 m/m	1	MAC ATTACK 2060 BOTTOM	
FRONT		1	MAC ATTACK 2060 FRONT	
REAR		1	MAC ATTACK 2060 REAR	

MAC ATTACK 2060 PART LIST

DESCRIPTION	SPECIFICATION	Q'TY	DRAWING NO.	REMARK
POLY BAG	350 X 470 X 0.05T	1		
	80 X 110 X 0.05T	1		
SILICAGEL	3 [g]	1		
OPP TAPE		0,625		
TUBE	YELLOW 1 ϕ	0,05		
LOCKING PAINT	THREE BOND 1 [Kg]	0,001		
MAXBOND	1603HFR 1 [Kg]	0,004		
GIFT BOX	MAC ATTACK 2060	1		
MANUAL		1		
SERIAL NO.		1		
WARRANTY CARD		1		
CARTON BOX		0,25		
INNER BOX		1		