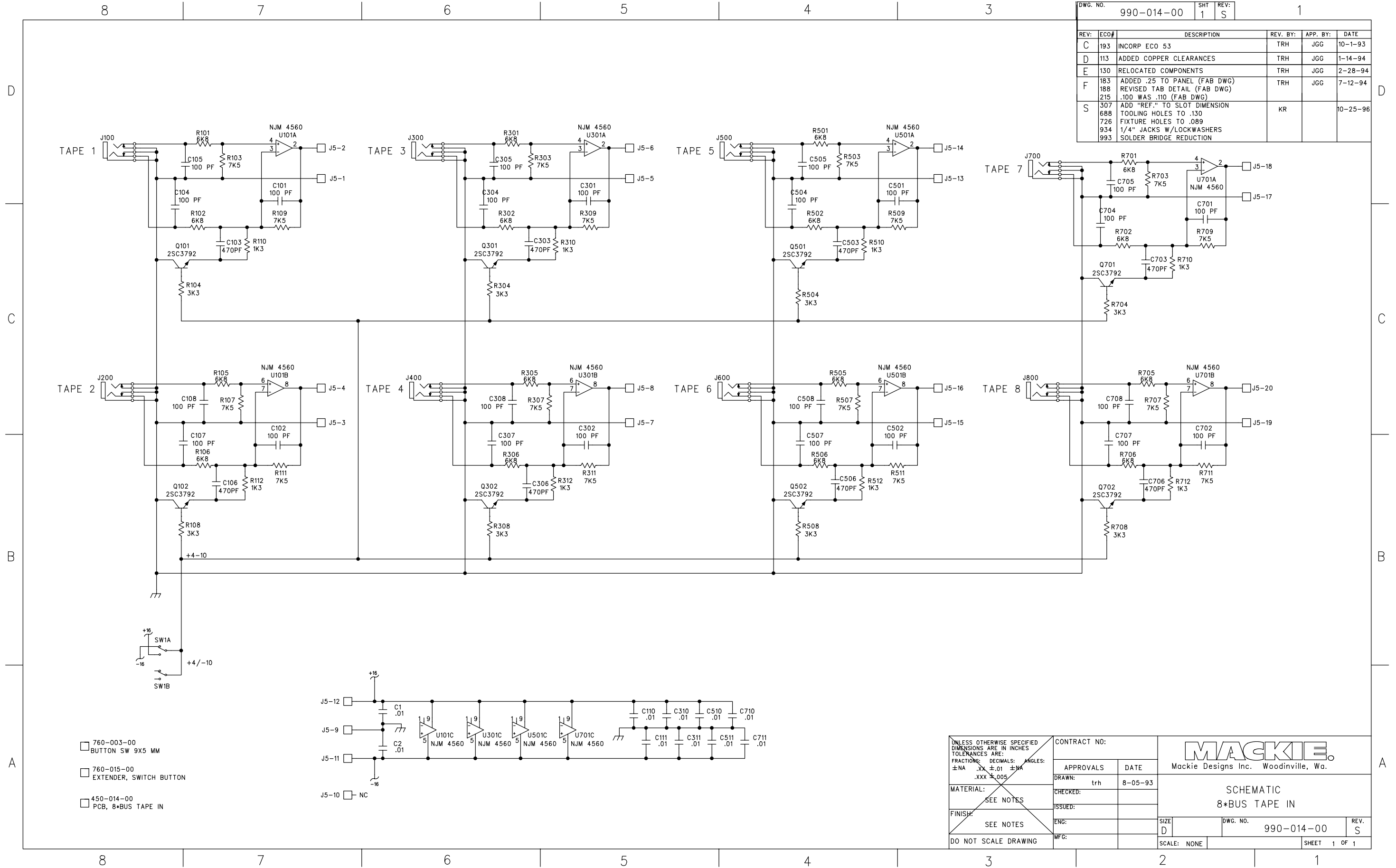


DWG. NO.	990-014-00	SHT	1	REV:	S	1
REV:	ECO#	DESCRIPTION	REV. BY:	APP. BY:	DATE	
C	193	INCORP ECO 53	TRH	JGG	10-1-93	
D	113	ADDED COPPER CLEARANCES	TRH	JGG	1-14-94	
E	130	RELOCATED COMPONENTS	TRH	JGG	2-28-94	
F	183	ADDED .25 TO PANEL (FAB DWG)	TRH	JGG	7-12-94	
	188	REVISED TAB DETAIL (FAB DWG)				
	215	.100 WAS .110 (FAB DWG)				
S	307	ADD "REF." TO SLOT DIMENSION	KR		10-25-96	
	688	TOOLING HOLES TO .130				
	726	FIXTURE HOLES TO .089				
	934	1/4" JACKS W/LOCKWASHERS				
	993	SOLDER BRIDGE REDUCTION				



- 760-003-00  
BUTTON SW 9X5 MM
- 760-015-00  
EXTENDER, SWITCH BUTTON
- 450-014-00  
PCB, 8-BUS TAPE IN

UNLESS OTHERWISE SPECIFIED DIMENSIONS ARE IN INCHES TOLERANCES ARE: FRACTIONS: DECIMALS: ANGLES: ±NA .XX ±.01 ±NA .XXX ±.005	CONTRACT NO:		<b>MACKIE</b> Mackie Designs Inc. Woodinville, Wa.		
	APPROVALS	DATE			
	MATERIAL:	CHECKED: trh	8-05-93	SCHEMATIC 8-BUS TAPE IN	
	FINISH:	ISSUED:			
DO NOT SCALE DRAWING	ENG:		SIZE D	DWG. NO. 990-014-00	
	MFG:		SCALE: NONE	REV. S	
				SHEET 1 OF 1	

